

# Aligning Portfolios With Paris

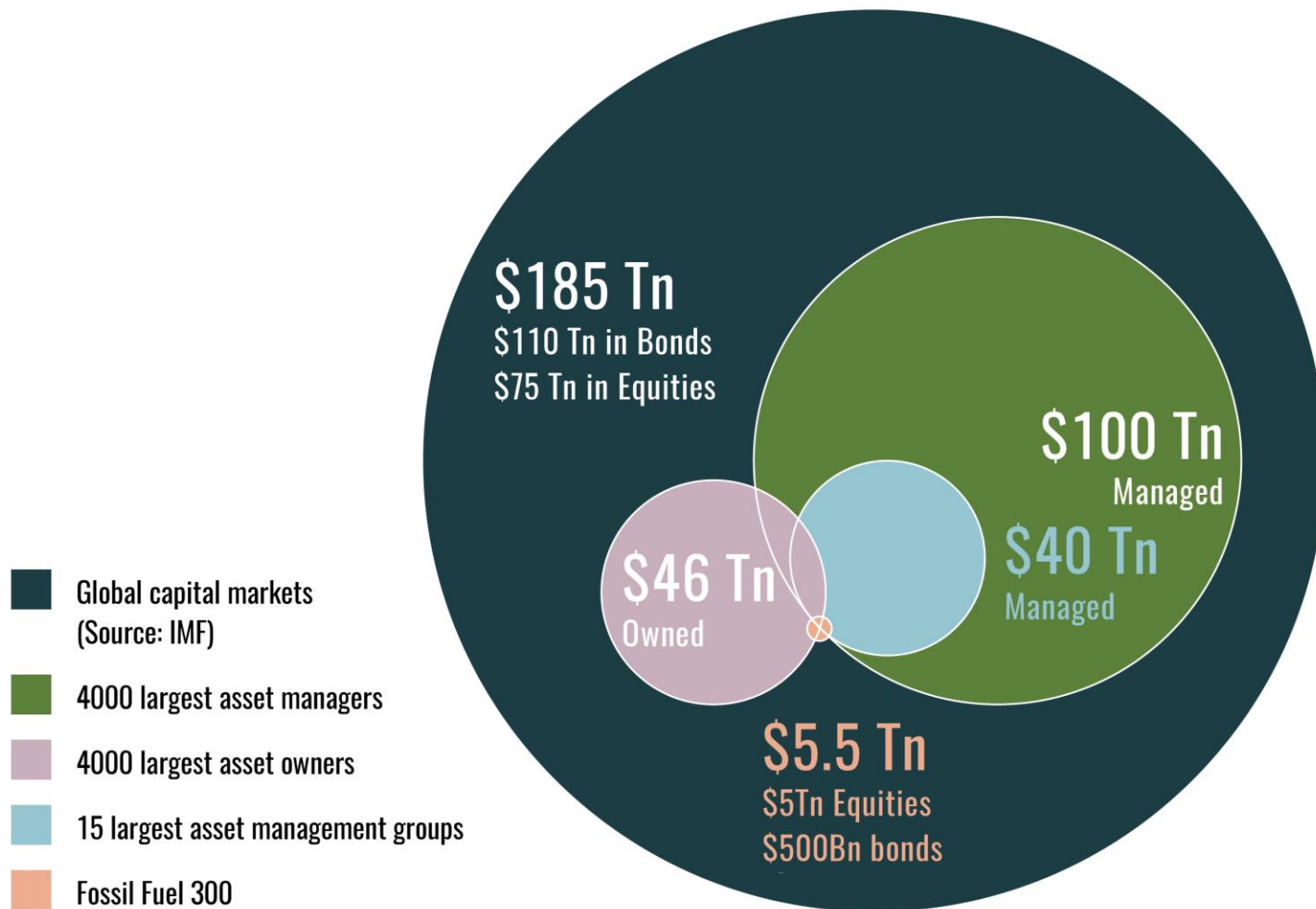
Climate KIC - Zurich 2018

Thomas O'Neill  
Research Director

November 20 2018

## Partners





Product Type: All Funds (2,573) Filter by keyword, fund name, etc.

Select categories

Asset Class		Style	Popular Strategies		Region			Market	Climate
Equity 1400	Fixed Income 842	Active 1749	Alternatives 152	Income 169	United Kingdom 250	Europe 737	Global 1212	Emerging 444	<b>Paris Aligned</b>
Multi Asset 274	Commodity 7	Index 824	Outcome Focused 101		North America 290	Asia Pacific 301	Latin America 32	Developed 2109	

See more categories

## Paris Alignment Score



Apply

Showing 544 of 544 total funds

Download

Overview									
Price Performance Risk & Analytics									
Sort by: share classes funds Group by Asset Class									
Name	Share Class	Distribution Type	Ccy	Domicile	OCF	AUM (M)	As Of	Fact Sheet	Paris Alignment Score
ACS 30:70 Global Equity Tracker Fund	Class X1	Accumulating	GBP	United Kingdom	0.01	3,732.16	19-Oct-18	Download	
ACS 50:50 Global Equity Tracker Fund	Class X1	Accumulating	GBP	United Kingdom	0.01	8,735.85	16-Nov-17	Download	
ACS 60:40 Global Equity Tracker Fund	Class X1	Accumulating	GBP	United Kingdom	0.02	2,528.04	18-Oct-18	Download	
ACS Continental European Equity Tracker Fund	Class X1	Accumulating	GBP	United Kingdom	0.03	572.48	17-Jul-17	Download	

## Why IEMG?

1. Exposure to a broad range of emerging market companies
2. Low cost, comprehensive access to stocks in emerging market countries
3. Use at the core of a portfolio to diversify internationally and seek long-term growth

## INVESTMENT OBJECTIVE

The iShares Core MSCI Emerging Markets ETF seeks to track the investment results of an index composed of large-, mid- and small-capitalization emerging market equities.

## Sustainability Characteristics

ESG metrics help investors evaluate companies based on environmental, social, and governance risks and opportunities – and the companies' ability to manage them. They can help investors integrate material, non-financial information into their investment process. [Learn more.](#)

MSCI ESG Quality Score ⓘ  
as of Nov 01, 2018

4.3

MSCI ESG % Coverage ⓘ  
as of Nov 01, 2018

92.78%

MSCI Weighted Average Carbon Intensity  
(Tons CO2E/\$M SALES) ⓘ  
as of Nov 01, 2018

343.46

MSCI ESG Quality Score - Peer Rank ⓘ  
as of Nov 01, 2018

27.95%

Fund Lipper Global Classification ⓘ  
as of Nov 01, 2018

Equity Emerging Mkts Global

Paris Alignment Score ⓘ  
as of Nov 01, 2018

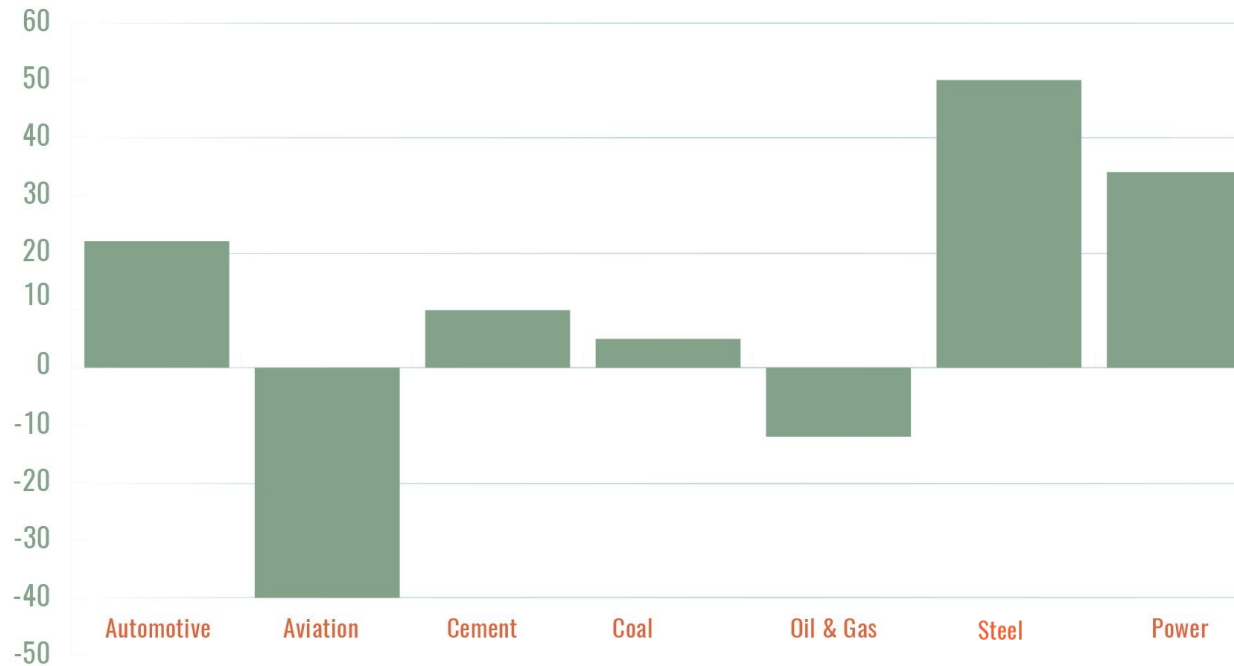
20



## Fund – Sector Paris Alignment

+30

2C Alignment Scores



Sector

# Coal

Paris Alignment Score (Sector)

## -20

Paris Alignment Score (Portfolio)

## 40

Company	Ticker Symbol	Number of Shares Held	Value of Shares Held (\$)	Coal Production (Tons/Year)	Coal Reserves (Tons)
< Shaanxi Coal Industry Coal >	< 601225.SS >	< 1,808,300 >	< 1,885,876 >	< 19,894 >	< 261,690 >
< Shanxi Coal International Energy Group >	< 600546.SS >	< 1,768,400 >	< 1,249,551 >	< 17,421 >	< 966,842 >
< Yanzhou Coal Mining Co >	< 600188.SS >	< 595,100 >	< 1,074,453 >	< 5,910 >	< 852,631 >
< Company Name >	< RIC >	< # >	< # >	< Coal Production >	< Coal_Reserves_3P_End >
< Company Name >	< RIC >	< # >	< # >	< Coal Production >	< Coal_Reserves_3P_End >
< Company Name >	< RIC >	< # >	< # >	< Coal Production >	< Coal_Reserves_3P_End >
< Company Name >	< RIC >	< # >	< # >	< Coal Production >	< Coal_Reserves_3P_End >
< Company Name >	< RIC >	< # >	< # >	< Coal Production >	< Coal_Reserves_3P_End >

# Questions?